

PRODUCT SPECIFICATIONS



IMAC 2000 S / 2000 EC / 2000 EC 2T / 2200 EC 2T

TECHNICAL SPECIFICATIONS | DIMENSIONS AND WEIGHTS

1kW=860 kcal/hr 1kW=3.413 Btu/hr 1kW=3.6mJ/h 1kg=1.2 l/hr

MODEL IMAC	1200 EC	1500 EC	2000 EC	2000 S	2000 EC 2T	2200 EC 2T	4000 E
Fuel	Diesel	Diesel	Diesel	Diesel	Diesel	Diesel	Diesel
Heat output (Btu/hr)	409,000	495,000	683,000	683,000	477,700 / 683,000	477,700 / 683,000	891,000 / 1.307,000
Heat output (kW)	120	145	200	200	140 / 200	140 / 220	261 / 383
Fuel consumption max. (l/hr)	11.4	13.6	20	20	13.9 / 20	13.9 / 20.5	26 / 38
Efficiency (%)	92	92	92	92	92	92	92
2-step burner and fan					*	*	*
Heated air flow (m³/hr)	8.500	10.000	12.000	12.000	9.000 / 12.000	9.000 / 12.000	18.000 / 24.000
Max. ventilator back pressure (Pa)	500	600	600	600	350 / 600	350 / 550	400 / 1.000 / 700
Power supply (V)	3 x 400	3 x 400	3 x 400	3 x 400	3 x 400	3 x 400	3 x 400
Power consumption (AMPS)	3.5	6	6	7.5	4 / 6	4 / 6	9 - 20 - 20.3
EC fanmotor	*	*	*		*	*	
Outlet cone Ø (mm)	1 x 500	1 x 500	1 x 600	1 x 600	1 x 600	1 x 600	3 x 500
Flue connection Ø (mm)	200	200	200	200	200	200	300
Thermostat connection	1	1	1	1	2	2	1
Dim. heater only L x W x H (mm)	2200 x 800 x 1350	2200 x 800 x 1351	2400 x 800 x 1350	2400 x 800 x 1350	2400 x 800 x 1350	2400 x 800 x 1350	3850 x 1200 x 2010
Dim. incl. packing L x W x H (mm)	2110 x 800 x 1350	2110 x 800 x 1351	2310 x 800 x 1350	2310 x 800 x 1350	2310 x 800 x 1350	2310 x 800 x 1350	3850 x 1200 x 2010
Weight (kg)	467	467	545	545	550	550	1.300
Weight incl. packing (kg)	467	467	545	545	550	550	1.300

FEATURES

MODEL IMAC	1200 EC	1500 EC	2000 EC	2000 S	2000 EC 2T	2200 EC 2T	4000 E
FLUE STACKS							
Galvanized pipe 1 m, Ø 200 mm	*	*	*	*	*	*	
Galvanized pipe 1 m, Ø 300 mm							*
Galvanized rain cap, Ø 200 mm	*	*	*	*	*	*	
Galvanized rain cap, Ø 300 mm							*
Galvanized bend 45°, Ø 200 mm	*	*	*	*	*	*	
Galvanized bend 45°, Ø 300 mm							*
THERMOSTATS							
RT1, room thermostat -10/+40 °C with 5 m cable and plug, IP 54, switching differential ± 2 degrees	*	*	*	*	*	*	*
RT2, as RT1, with 10 m cable IP 54	*	*	*	*	*	*	*
RT3, as RT1, with 20 m cable IP 54	*	*	*	*	*	*	*
IT1, duct thermostat 0/100 °C with 6 m cable and plug, switching differential ± 1.5%. For control of temperature in ducting system	*	*	*	*	*	*	*
DA1, dual connection for thermostat. For control of 2 heaters on 1 thermostat	*	*	*	*	*	*	*
Extension cable 10 m for thermostat, with plug	*	*	*	*	*	*	*
GSM Fault indicator for IMAC heaters	*	*	*	*	*	*	*
GSM Temperature monitoring set, no connections needed. Regardless of the type of heater	*	*	*	*	*	*	*
SWITCHING / ELECTRONICS							
Transformer set for electrical connections without 0	*	*	*	*	*	*	*

PRODUCT SPECIFICATIONS

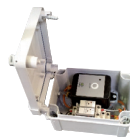
MODEL IMAC		1200 EC	1500 EC	2000 EC	2000 S	2000 EC 2T	2200 EC 2T	4000 E
DISTRIBUTION HEADS								
	Ø (mm)							
To be fixed instead of standard outlet panel (ex works, if necessary), excluding clamps	500	s	s	*	*	*	*	
	600	*	*	s	s	s	s	
	2 x 500	*	*	*	*	*	*	
	4 x 300	*	*	*	*	*	*	
	6 x 300	*	*	*	*	*	*	
	800							*
	2 x 600							*
s = standard	3 x 500							s
WARM AIR TRANSPORT HOSES								
Temperature resistant -30/+100 °C green, L = 6 m	300	v	v	v	v	v	v	
	500	s / v	s / v	v	v	v	v	s
	600	v	v	s	s	s	s	v
v = distribution head instead of standard outlet cone	800							v
On request warm air transport hoses temperature resistant -40/+80 °C and warm air transport hoses in other colours are available.								
RUBBER QUICK RELEASE CLAMPS FOR HOSES WITH END RING								
To connect hoses and if desired to fix to the heater flange	300			--- for 300 mm hoses ---				
	500			--- for 500 mm hoses ---				
	600			--- for 600 mm hoses ---				
	800			--- for 800 mm hoses ---				
GALVANIZED HOSE CLIPS								
To fasten hoses to the heater flange or to a connection piece	60 - 600			--- for 60 till 600 mm hoses ---				
RECIRCULATION FLANGES AND HOSES								
Recirculation flange	600	*	*	*	*	*	*	
	L (m)							
Recirculation hoses Ø 600 mm	5	*	*	*	*	*	*	*
	10	*	*	*	*	*	*	*
HOSE CONNECTION BEND 45 DEGREES								
To connect hoses to marquees	300	v	v	v	v	v	v	
v = distribution head instead of standard outlet cone	500	s / v	s / v	v	v	v	v	s
FRESH AIR SUCTION FLANGES								
Suction flange for oil burner SL 44 / 55		*	*	*	*	*	*	
FUEL ACCESSORIES								
Oil supply unit DE 600, 60 litre to transport oil under pressure from bulk tank to one or more heaters, to maximum height of 30 m		*	*	*	*	*	*	*
Needed per heater: connection / reduction set with magnetic valve		*	*	*	*	*	*	*
Oil preheating with cable (for SL 44 / SL 55)		*	*	*	*	*	*	*
Oil filter with water separation and bracket for return pipe		*	*	*	*	*	*	*
Oil filter set with preheating		*	*	*	*	*	*	*
Oil suction set universal		*	*	*	*	*	*	*



Flue stack with raincap



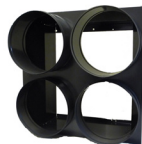
RT1, RT2, RT3



GSM Fault indicator for IMAC heaters



GSM Temperature monitoring set



Distribution head



Green hose + end ring



Rubber quick release clamp



Hose clamp